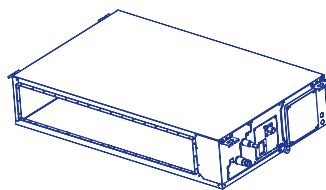




DESIGNED FOR YOUR SPACE
BUILT FOR YOUR COMFORT

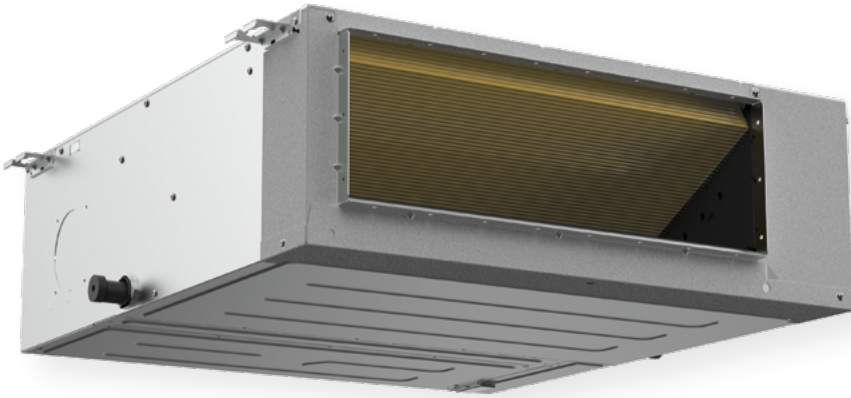


**NEW TWO WAY INSTALLATION
INVERTER DUCTED UNIT**

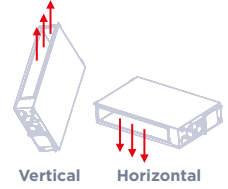
INVERTER DUCTED



XPOWER
42QSV



Two way installation:



Smaller & lighter

Elegance & comfort for lower - ceiling installations

Carrier New Duct unit has smaller & lighter design with maximum volume reduction of 20% and maximum weight reduction of 20%, suitable for low - ceiling installations. It comes ready with the option of fresh air intake function when connected to additional ventilation duct. Whether return air is required from the rear or bottom, both can be easily achieved on site by changing over the cover, as both air inlets have the same frame size. Moreover, the unit is designed with improved static pressure MSP from 100 to 160*, suitable for short or long duct, with or without dampers. Equipped with constant air volume control technology, Carrier Concealed Duct automatically adjusts the static pressure to deliver constant air volume for optimal occupants' comfort. Moreover, reserved ports are available for long distance ON/OFF remote control by connecting to a switch, and providing an alarm signal for external alarm light or vibration gauge.



FEATURES



Compact and powerful Single Fan ODU. Same output as the Double Fan ODU



New Dragonfly - like Fan, Grille and Air Channel. Offers larger air volume and more focused airflow with less noise



Optimized E - box Design with Dual Cooling Methods



Power density increased: X6 PCB integrated, two boards into one board. Power density increased by 38%



Noise reduction: Compared to A6 reduce 3 - 5 dBA



Electrical Voltage Protection (168 to 264V)



Forced Operation Function



Auto - Restart Function



Defrosting Mode



Follow Me



Wi-Fi active



Comfort Zone Manager



Wired Control

* The feature will depend on mode

TECHNICAL CHARACTERISTICS SINGLE PHASE

INDOOR UNIT		42QSV009D8S	42QSV012D8S	42QSV018D8S	42QSV024D8S	42QSV030D8S	42QSV036D8S	42QSV042D8S
OUTDOOR UNIT		38QUS009D8SX	38QUS012D8S - 1	38QUS018D8S - 1	38QUS024D8SX	38QUS030D8SX	38QUS036D8S	38QUS042D8S
Cooling Capacity	Btu/h	9.000 (1.200 - 13.000)	12.000 (1.800 - 13.334)	18.000 (4.500 - 21.000)	24.200 (11.000 - 27.000)	30.000 (7.600 - 34.000)	36.000 (9.400 - 40.000)	41.300 (10.000 - 42.000)
Cooling Capacity	kW	2.6 (0.35 - 3.81)	3.5 (0.52 - 3.91)	5.3 (1.32 - 6.15)	7.1 (3.22 - 7.91)	8.8 (2.23 - 9.97)	10.5 (2.75 - 11.72)	12.1 (2.93 - 12.31)
Input	W	720 (135 - 1.182)	1.164 (155 - 1.465)	1.590 (360 - 2.130)	2.280 (750 - 2.860)	2.800 (190 - 3.450)	3.950 (900 - 4.300)	4.000 (680 - 4.500)
Current	A	3.2 (1.1 - 5.26)	4.77 (1.3 - 6.47)	7.1 (1.6 - 9.4)	10 (4.2 - 12.6)	12.5 (2.0 - 15)	17.5 (4.2 - 19)	18.0 (3.1 - 19.8)
EER	W/W	3.66	3.02	3.32	3.11	3.14	2.67	3.03
Heating Capacity	Btu/h	10.000 (3.200 - 11.877)	13.000 (3.400 - 15.241)	20.500 (5.100 - 21.500)	27.200 (9.500 - 29.200)	32.000 (9.200 - 34.100)	40.000 (9.500 - 43.000)	46.000 (11.500 - 48.000)
Heating Capacity	kW	2.9 (0.94 - 3.48)	3.8 (1.00 - 4.47)	6.0 (1.49 - 6.30)	8.0 (2.78 - 8.56)	9.4 (2.70 - 9.99)	11.7 (2.78 - 12.60)	13.5 (3.37 - 14.07)
Input	W	850 (290 - 852)	1.285 (302 - 1.423)	1.615 (500 - 1.850)	2.000 (640 - 2.500)	2.400 (430 - 2.550)	3.250 (800 - 3.950)	3.550 (750 - 4.100)
Current	A	3.81 (1.38 - 3.81)	5.69 (1.48 - 6.29)	7.2 (2.2 - 8.1)	9.00 (3.8 - 11)	10.6 (3.0 - 11.5)	14.5 (3.5 - 17.5)	16.0 (3.4 - 18.5)
COP	W/W	3.44	2.97	3.72	3.99	3.91	3.61	3.80
Seasonal Cooling SEER	W/W	6.5	6.5	6.5	6.6	6.6	6.3	6.1
Seasonal Cooling Energy Efficiency Class		A++	A++	A++	A++	A++	A++	A++
Heating (Average) SCOP	W/W	4.1	4.1	4.1	4.2	4.2	4.1	4.1
Heating (Average) Energy Efficiency Class		A+	A+	A+	A+	A+	A+	A+
Heating (Warmer) SCOP	W/W	5.1	5.1	5.1	5.4	5.5	5.1	5.1
Heating (Warmer) Energy Efficiency Class		A+++	A+++	A+++	A+++	A+++	A+++	A+++
Rated Power Input	W	1820	1850	2950	3700	4500	5000	5000
Rated Current	A	8.5	9	13.5	19	20	22.5	22.5
Compressor Type		Rotary	Rotary	Rotary	Rotary	Rotary	Rotary	Rotary
Indoor air flow (Hi/Mi/Lo)	m³/h	620/540/450	660/570/470	900/780/650	1200/1000/700	1500/1200/900	1700/1400/1100	2000/1700/1300
Indoor noise level (Hi/Mi/Lo/Si)	dB(A)	35/33/31/27	35/33/31/26	36.5/34/31/25	33.5/32.5/31/27.5	39/37/35/30	38/36/33/29	39/37/35.5/33
Indoor sound power level	dB(A)	52	52	53	56	60	62	62
External static pressure	Pa	0 - 100	0 - 100	0 - 160	0 - 160	0 - 160	0 - 160	0 - 160
Dimension (W*D*H)	mm	700x506x200	700x506x200	700x750x245	1000x750x245	1000x750x245	1200x750x245	1200x750x245
Net weight	kg	16.6	16.6	24.4	31.8	32.7	38.4	40.6
Outdoor air flow	m³/h	2200	2200	2100	3500	3800	4000	4000
Outdoor sound pressure level	dB(A)	53	55.5	59	60	60	65	63.5
Outdoor sound power level	dB(A)	62	62	62	69	70	70	72
Dimension (W*D*H)	mm	765x303x555	765x303x555	805x330x554	890x342x673	946x410x810	946x410x810	946x410x810
Net weight	kg	24.6	26.6	32.5	41.9	51	66.9	71
Refrigerant Type		R32	R32	R32	R32	R32	R32	R32
Refrigerant GWP		675	675	675	675	675	675	675
Refrigerant Charged quantity	kg	0.65	0.71	1.15	1.4	1.8	2.4	2.8
Design pressure	MPa	4.3/1.7	4.3/1.7	4.3/1.7	4.3/1.7	4.3/1.7	4.3/1.7	4.3/1.7
Liquid side/Gas side Refrigerant piping	inch	1/4 - 3/8	1/4 - 3/8	1/4 - 1/2	3/8 - 5/8	3/8 - 5/8	3/8 - 5/8	3/8 - 5/8
Max. refrigerant pipe length	m	25	25	30	50	50	75	75
Max. difference in level	m	10	10	20	25	25	30	30
Thermostat type depend on order		Wire Control	Wire Control	Wire Control	Wire Control	Wire Control	Wire Control	Wire Control
Room temperature Indoor (cooling/heating)	°C	16 - 32/0 - 30	16 - 32/0 - 30	16 - 32/0 - 30	16 - 32/0 - 30	16 - 32/0 - 30	16 - 32/0 - 30	16 - 32/0 - 30
Room temperature Outdoor (cooling/heating)	°C	- 15 - 50/ - 20 - 24	- 15 - 50/ - 20 - 24	- 15 - 50/ - 20 - 24	- 15 - 50/ - 20 - 24	- 15 - 50/ - 20 - 24	- 15 - 50/ - 20 - 24	- 15 - 50/ - 20 - 24
Application area (Cooling Standard)	m²	12 - 18	16 - 23	24 - 35	32 - 47	40 - 59	48 - 70	55 - 81
Power supply	V-Ph-Hz	220 - 230V - 1Ph, Frequency - 50HZ						

Notes:

* Sound data @ cooling mode

* - 7°C / - 10°C / - 15°C heating @ free Frequency

** Nominal means the noise value at rated cooling mode when compressor running at nominal Frequency.



TECHNICAL CHARACTERISTICS *THREE PHASE*

INDOOR UNIT		42QSV036D8S	42QSV048D8S	42QSV060D8S
OUTDOOR UNIT		38QUS036D8T	38QUS048D8TX	38QUS060D8TX
Cooling Capacity	Btu/h	36.000 (9.300 - 40.000)	48.000 (12.000 - 54.000)	52.000 (14.000 - 59.000)
Cooling Capacity	kW	10.6 (2.73 - 11.72)	14.0 (3.52 - 15.83)	15.3 (4.10 - 17.30)
Input	W	3.900 (890 - 4.200)	4.500 (810 - 6.450)	5.250 (1030 - 6.650)
Current	A	6.0 (1.4 - 6.7)	7.0 (1.8 - 10.5)	8.1 (3.1 - 11.5)
EER	W/W	2.71	3.13	2.9
Heating Capacity	Btu/h	40.000 (9.500 - 43.800)	55.000 (14.000 - 60.000)	62.000 (15.000 - 70.000)
Heating Capacity	kW	11.7 (2.78 - 12.84)	16.1 (4.10 - 17.60)	18.2 (4.40 - 20.5)
Input	W	3.300 (780 - 4.000)	4.600 (950 - 5.800)	5.150 (950 - 6.600)
Current	A	5.3 (1.3 - 6.4)	8.0 (2.0 - 9.0)	8.0 (2.0 - 11.5)
COP	W/W	3.55	3.50	3.53
Seasonal Cooling SEER	W/W	6.1	6.1	6.1
Seasonal Cooling Energy Efficiency Class		A++	A++	A++
Heating (Average) SCOP	W/W	4.0	4.0	4.0
Heating (Average) Energy Efficiency Class		A+	A+	A+
Heating (Warmer) SCOP	W/W	5.1	5.1	5.1
Heating (Warmer) Energy Efficiency Class		A+++	A+++	A+++
Rated Power Input	W	5000	7300	7500
Rated Current	A	10.0	14.0	14
Compressor Type		Rotary	Rotary	Rotary
Indoor air flow (Hi/Mi/Lo)	m ³ /h	1700/1400/1100	2000/1700/1300	2200/1900/1500
Indoor noise level (Hi/Mi/Lo/Si)	dB(A)	39/37/34/29	43.5/41.5/39.5/36	44.5/43/41.5//
Indoor sound power level	dB(A)	62	65	66
External static pressure	Pa	0 - 160	0 - 160	0 - 160
Dimension (W*D*H)	mm	1200*750*245	1200*750*245	1200*750*300
Net weight	kg	38.4	40.4	42.9
Outdoor air flow	m ³ /h	4000	5600	5600
Outdoor sound pressure level	dB(A)	65	64.5	64
Outdoor sound power level	dB(A)	70	73	74
Dimension (W*D*H)	mm	946*410*810	980*375*975	980*375*975
Net weight	kg	75.5	90	92
Refrigerant Type		R32	R32	R32
Refrigerant GWP		675	675	675
Refrigerant Charged quantity	kg	2.4	2.9	3.2
Design pressure	MPa	4.3/1.7	4.3/1.7	4.3/1.7
Liquid side/Gas side Refrigerant piping	inch	3/8 - 5/8	3/8 - 5/8	3/8 - 5/8
Max. refrigerant pipe length	m	75	75	75
Max. difference in level	m	30	30	30
Thermostat type depend on order		Wire Control	Wire Control	Wire Control
Room temperature Indoor (cooling/heating)	°C	16 - 32/0 - 30	16 - 32/0 - 30	16 - 32/0 - 30
Room temperature Outdoor (cooling/heating)	°C	- 15 - 50/ - 20 - 24	- 15 - 50/ - 20 - 24	- 15 - 50/ - 20 - 24
Application area (Cooling Standard)	m ²	48 - 70	64 - 94	69 - 102
Power supply	V-Ph-Hz	380 - 415V - 3Ph, Frequency - 50HZ		

Notes:

* Sound data @ cooling mode

* - 7°C / - 10°C / - 15°C heating @ free Frequency

** Nominal means the noise value at rated cooling mode when compressor running at nominal Frequency.



AHI CARRIER SEE

GREECE

AHI CARRIER S.E. EUROPE SINGLE MEMBER S.A.

Headquarters

18, Kifissou Ave.
104 42 - Athens
Tel.: +30 210 6796300

Thessaloniki Branch

5, Ag. Georgioy str., Cosmos Offices
570 01 - Patriarhiko Pileas Thessaloniki
Tel.: +30 231 3080430

grinfo@ahi - carrier.eu
www.ahi - carrier.gr

BULGARIA

AHI CARRIER HVAC BULGARIA EOOD

Trade Center Europe Building 6,
floor 3, office 6
7 Iskarsko Shose Blvd., Sofia 1528
Tel.: +35 929483960
bginfo@ahi - carrier.com
www.ahi - carrier.bg

ROMANIA

AHI CARRIER ROMANIA SRL

Intrarea Nestorei 1, Corp B, Et. 5, Sector 4
Cladirea River Plaza, RO - 040295
Bucuresti
Tel.: +40 214 050751
roinfo@ahi - carrier.eu
www.ahi - carrier.ro